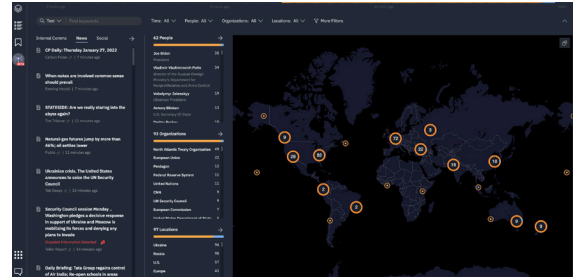


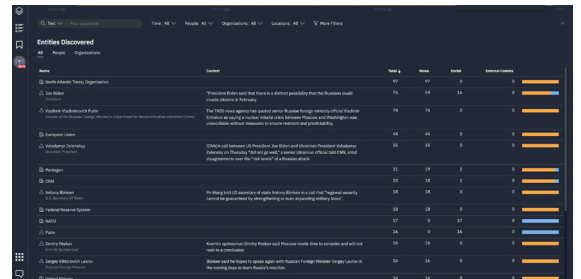
**The Situation:** It's early February 2022, Russia now has more than 100,000 troops along the Ukrainian-Russian border. An increasing number of indicators suggest an impending invasion. It's your responsibility to quickly gain situational awareness on the ground and assess the impact of events as they are unfolding. You leverage **Primer Command**, the first-of-its-kind AI technology created by and for security analysts, to cut through the noise and quickly surface key insights to identify the “who, what, when, where, and why” of this breaking event in the first 10 minutes of your day.

TIMELINE

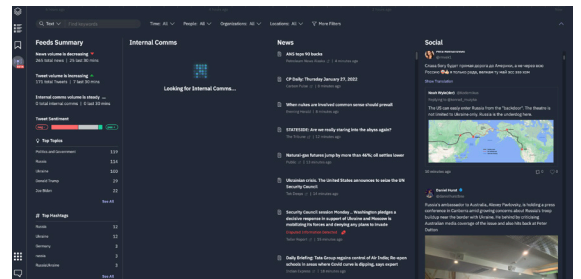
**0700** Run your custom query on **Russia/Ukraine** and monitor the situation in real-time with a comprehensive overview dashboard.



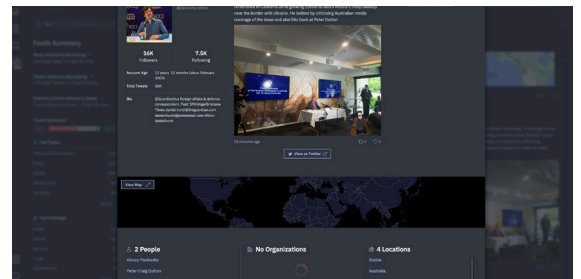
**0702** Who: Surface and understand the key **People** and **Organizations** relevant to the situation and the context around their involvement.



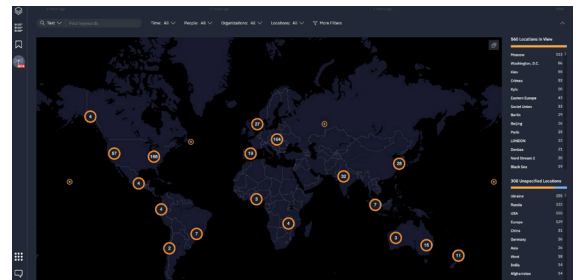
**0705** What: Explore **News** and **Social** feeds, including public sentiment, disputed information, key topics, hashtags, and trending links.



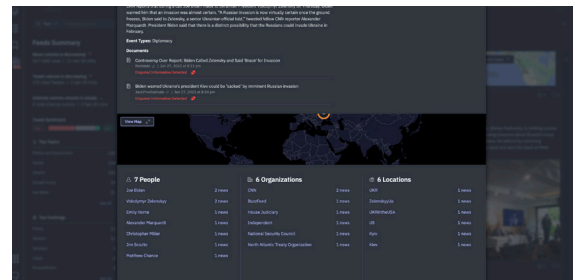
**0707** When: Get real-time updates on **#BREAKING** news, including translations of over 100 languages.



**0709** Where: Gain situational awareness on the ground by selecting **Locations** to create an interactive map of activity.



**0710** Why: Read summaries of news articles, including those with **Disputed Information**, to help identify fake news and understand narratives.



**WANT TO LEARN MORE?  
 CONTACT US:**

**Primer National Security Group**  
[natsecgroup@primer.ai](mailto:natsecgroup@primer.ai)