

Primer Provides Early Access To New AI Tool To Fill Collection Gaps In Afghanistan

The rapid departure of U.S. and allied troops from Afghanistan has created a collection and analysis gap for the Defense and Intelligence Communities during the critical early days of Taliban rule. Primer has spent the past three weeks accelerating the development of its prototype tool—Primer Command—to help close that gap by integrating novel Natural Language Generation capabilities to provide continuously updating situation reports on Afghanistan using open-source intelligence.

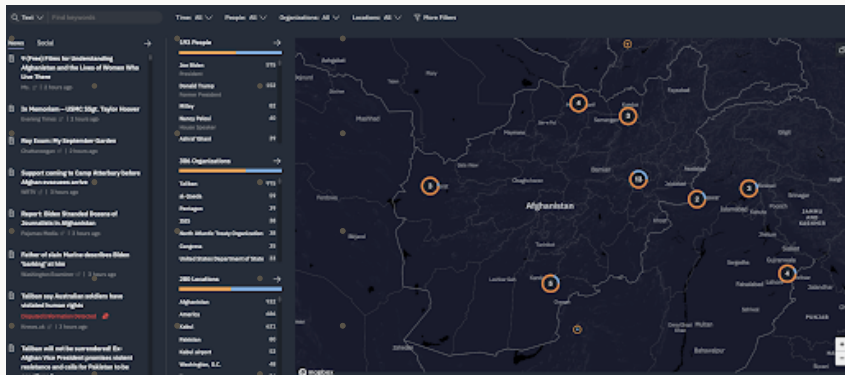
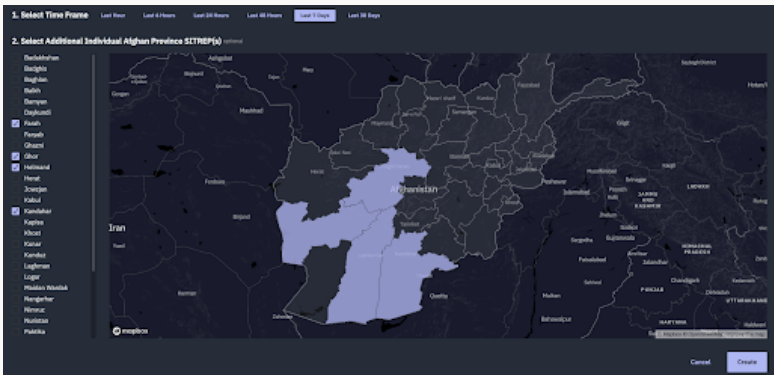
Developed over the past year in partnership with the USAF, USDI, and USSOCOM, Command is the first machine learning tool to utilize natural language processing and computer vision pipelines to continuously analyze and structure millions of pieces of content streaming in from over 80,000 news and social media sources in over 100 languages. Primer’s algorithms sift through vast volumes of information across disparate data feeds to deduplicate information, extract key entities, cluster related images, and detect suspected

disinformation in real-time. Command fills a critical gap in the toolkit of analysts and operators by giving them unmatched clarity as situations unfold.

In late-August, Primer established an internal Afghanistan Task Force to rapidly build out capabilities we anticipated our customers would require upon the departure of U.S. troops from Kabul. Drawing from our experience working with In-Q-Tel and our close partnership with intel and operations users across DOD, Primer has deployed a new capability within Command that we call Primer Tactical Insights. Tactical Insights processes the millions of pieces of content Primer ingests daily and enables users to automatically generate situation reports at the country level or on specific provinces, for their desired time frame.

01 AUTOMATICALLY AUTHOR SITUATION REPORTS

Primer Tactical Insights sitrep generator analyzes millions of pieces of content to automatically generate updates at the country level or by individual provinces.

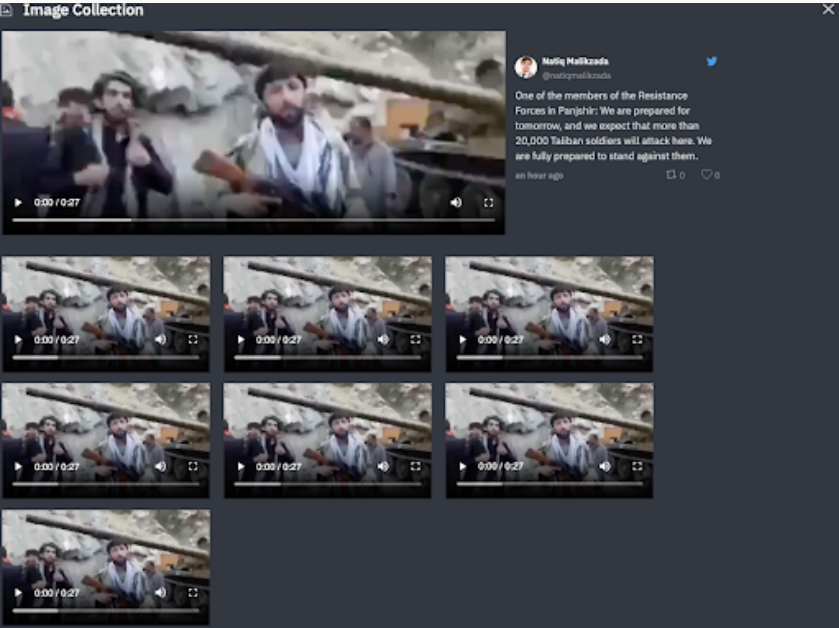


02 EXTRACT KEY ENTITIES AND DETECT DISPUTED INFORMATION

With Command’s extraction engines, analysts’ time can shift from searching incoming news and social media for entities, such as people, locations, and organizations to focusing on their significance and implications of their involvement in the event. Command also automatically detects, flags, and displays the origin and source of disputed information.

03 DIG DEEPER INTO SPECIFIC LOCATIONS

Operators can identify reporting related to specific locations of interest. By filtering for any location, the user can instantly see all the relevant posts mentioning the specific location.



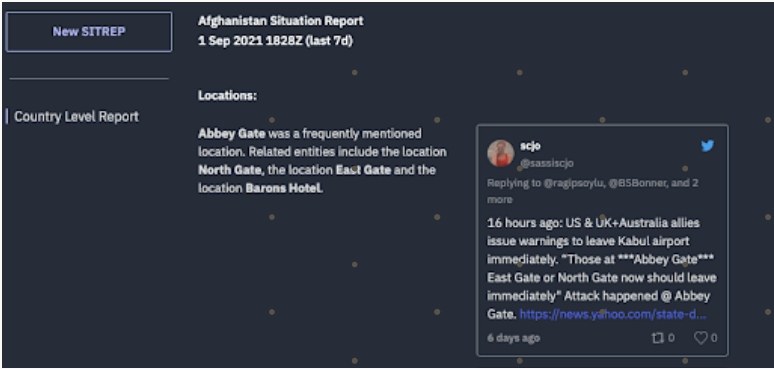
05 HOME IN ON KEY ORGANIZATION LEADERS

Users can identify reporting related to specific people of interest, allowing them to drill down into the individual to obtain publicly available information about them, such as their biography and whether they may have been involved in terrorist attacks in the past.

We are providing free access to this prototype capability to any user in the national security space for the next 90 days. [Sign up](#) to get free access.

Contact us
to learn more

Primer National Security Group | natsecgroup@primer.ai
1201 Wilson Blvd. Arlington, VA 22209



04 SEARCH IMAGES AND VIDEOS

Command allows users to find the images that matter most in a crisis by using computer vision algorithms to automatically analyze images and video feeds from social media.

